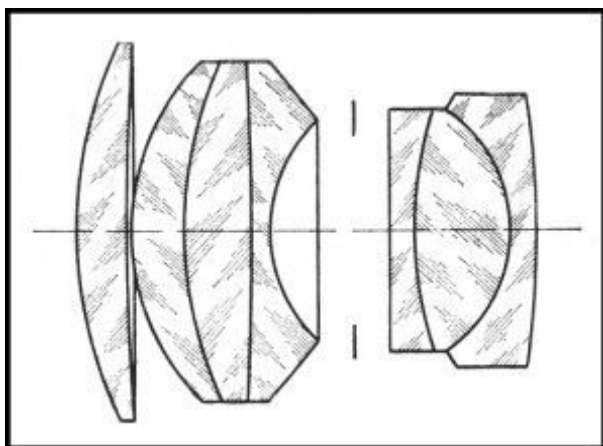


## The variants of **Jupiter-9** (Zorki)

**PT7005**. Seems to be an earliest version of "Jupiter-9" lens. Under initial name "ZK-85" ("Sonnar Kransogorsk"). Very few lenses released by KMZ in 1948-1949. These first samples are totally assembled from Zeiss (Germany) optical glasses. Focal length - 8.5 cm, aperture range f2 - f22. Focusing range from 1.8 m to infinity. Number of elements/groups: 7/3. Angular field - 28°. Zorki (M39) mount. An earliest so far known lens has s/n #000038 1948 (U.Witte coll.).

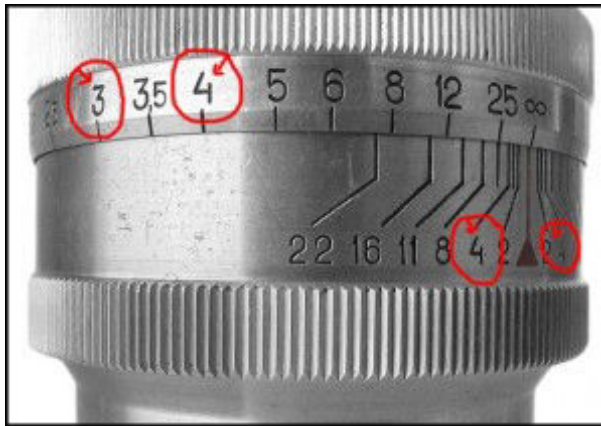


Picture opposite scanned from soviet camera catalogue (1949).

PT7005 - ZK 2.0/85mm lens.

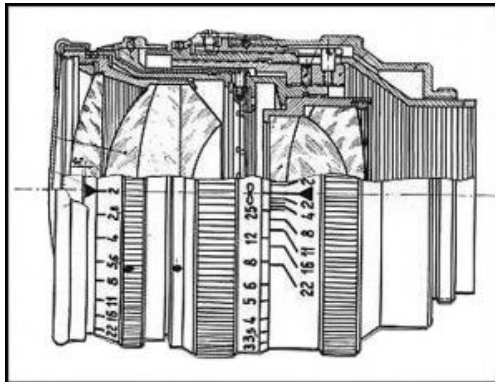
## The variants of **Jupiter-9** (Zorki)

**PT7010**. Almost identical to its predecessor "ZK-85" (PT7005), but under name "ZK Zorki" already. Very limited batch of these lenses released by KMZ in 1949-1950. Partially or totally assembled from Zeiss (Germany) optical glasses. Date prefix in the serial number already. Flat character "3" on body. Old style of character "4" engravings yet (see picture below). Still ultra rare to find nowadays. An earliest so far known lens has s/n #5000044 (SovietCams).



PT7010 - ZK Zorki #5000044.

**PT7015**. New generation of lens, under regular name "Jupiter-9". Almost identical to PT7010, but with wider meter scale disk already. New focusing range from 1.15m to infinity. Flat character "3" on body. Old style of character "4" engravings yet as on PT7005 or PT7010 lenses. Still ultra rare to find nowadays. Very limited quantity released by KMZ in 1950-1951.



Lens opposite scanned from KMZ camera catalogue (1963).



PT7015 - Jupiter-9 lens.

## The variants of **Jupiter-9** (Zorki)

**PT7020**. According to Princelle's book it's one of the first Jupiter-9 completely produced by KMZ. Experimental lens; the focusing ring is calibrated in millimeters.

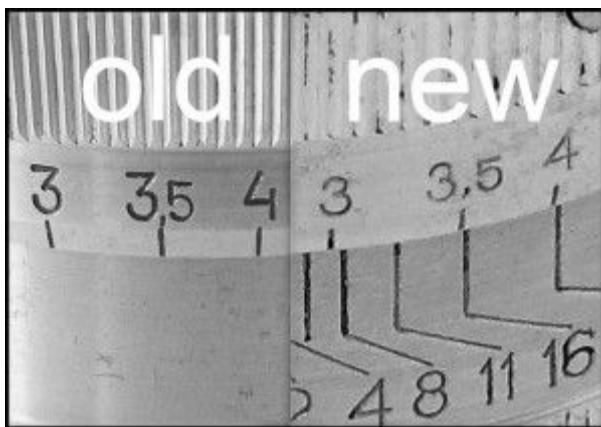
ОСНОВНЫЕ ДАННЫЕ	
Фокусное расстояние	85 мм
Относительное отверстие	1:2
Поле изображения	28°50'
Формат снимка	24 × 36 мм
Установка диафрагмы	2; 2,8; 4; 5,6; 8; 11; 16; 22
Разрешающая сила:	
в центре снимка	30 лин/мм
по полю	18 лин/мм
Габарит (диаметр × длина):	
для аппарата «Киев»	62 × 70 мм
»      »      «Зоркий»	59 × 77 мм
Вес:	
для аппарата «Киев»	330 г
»      »      «Зоркий»	380 г



Sample opposite from J.L. Princelle book "The Authentic Guide to Russian and Soviet Cameras", 2nd edition, 2004.

PT7020 - Jupiter-9 #510072.

**PT7025**. Seems to be an earliest version of the productional Jupiter-9 lens. Almost identical to PT7015, but with regular markings already: round character "3", instead of flat one on early samples, new style of character "4" already (see picture below). Released by KMZ in 1951-1960 (all KMZ versions). An earliest so far known lens has s/n #5101289 (A. Nikitin coll.).



PT7025 - Jupiter-9 #5101289.

Lens #5101289 opposite from Alexey Nikitin (Russia)

## The variants of **Jupiter-9** (Zorki)

**PT7027**. Further evolution of the Jupiter-9 lens by KMZ. Slightly changed lens construction, smaller markings in comparison with PT2025 (see picture below).



PT7027 - Jupiter-9 # 5400094.

## The variants of **Jupiter-9** (Zorki)

**PT7030**. One more version of the particular lens. Almost identical to PT7025, but with narrow aperture settings disk and wider meter scale disk. Released by KMZ in 1956 only (?). Signally changed body in comparison with earliest samples (see comparison picture below).



PT7030 - Jupiter-9 # 5600986.

**PT7035**. Seems to be the latest version of Jupiter-9, released by KMZ. A limited batch released in 1960 only. Almost identical to PT7027 (see comparison picture below), but with new markings on the lens faceplate: "1:2 F=8.5 cm" replaced by "2/85". The latest so far known lens has s/n #6022318 (eBay 2012).



PT7035 - Jupiter-9 #6019136.

## The variants of **Jupiter-9** (Zorki)

**PT7050**. Almost identical to PT7035, but released by LZOS {"Lytkarinskij Zavod Opticheskogo Stekla") in 1958-1961. White body. Name markings in Cyrillic characters. Old markings on the lens faceplate: "1:2 F=8.5 cm". Some lenses have an additional "MADE IN USSR" engravings on body.



**PT7052**. Identical to PT7050, but with new markings on the lens faceplate: "1:2 F=8.5 cm" replaced by "2/85". Released by LZOS in 1961-1963.



PT7050 - Jupiter-9 #6100155.

## The variants of **Jupiter-9** (Zorki)

**PT7055**. Identical to PT7052, but with export markings already. New markings "2/85" on the lens faceplate. Released by LZOS in 1963-1968. Flat character "3" markings as on earliest KMZ versions (see picture below). Quite common to find nowadays.



PT7055 - Jupiter-9 #6802385.

**PT7060**. Lens released by LZOS since 1963 (?). Identical to PT7055, but totally black already. Seems to be the latest version of the particular lens. Export name markings. Some lenses have an additional "MADE IN USSR" engravings on body (few different styles are known to exist). Very popular to find nowadays at the reasonable prices.



PT7060 - Jupiter-9 #7107465.