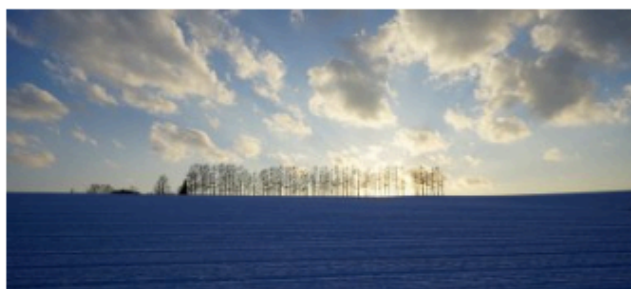


FEATURES



Wide-angle impact over a useful zoom range

A 16 mm to 35 mm wide-angle zoom range, coupled with effective built-in optical image stabilization makes this lens an excellent choice for snapshots, indoor scenes, group shots, landscapes, and more, especially with a full-frame $\alpha 7$ series body. The ZEISS® Vario-Tessar configuration offers outstanding performance in a compact, lightweight design.



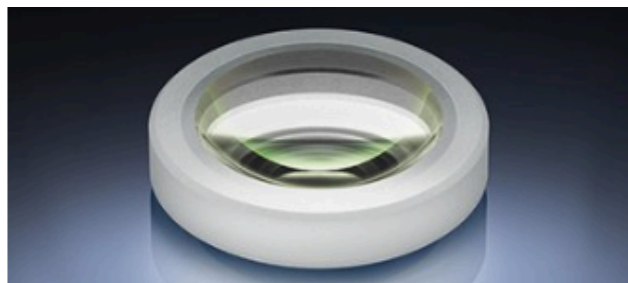
Refined optics deliver stunning images

Superior clarity and minimal distortion are achieved by an advanced optical design that includes one large AA element and three ED elements. The legendary ZEISS® T* (T-star) coating enhances performance even further by effectively suppressing reflections so that crisp, natural contrast is maintained, especially when shooting landscapes.



Constant exposure at any zoom setting

Constant aperture at all focal lengths means that the user can zoom and shoot at any aperture without having to worry about changes in exposure settings or depth of field, concentrating on the image rather than technical details. Maximum aperture is F4 through the zoom range.



Sharp and clear from corner to corner

Aspherical lens technology maximizes portability without sacrificing imaging power. The lens combines five aspherical elements (including one AA — advanced aspherical lens), with 3 ED (Extra-low Dispersion) glass elements to deliver high-precision shots and breathtaking rendering — without the bulky design usually associated with similar DSLR lenses.



Reliable and easy in any conditions

Reliable operation in a variety of conditions is ensured by a design that prevents dust and moisture from entering the lens.



Sharp and clear in any situation

Built-in Optical SteadyShot image stabilization compensates for camera shake that can blur images when shooting handheld. Sharp, clear night scenes or indoor shots in dim lighting can be captured without the need to boost ISO sensitivity and risk increased noise.

SPECIFICATIONS



ZEISS® 35 mm Full Frame wide-angle zoom lens



Constant F4 maximum aperture throughout zoom range



ZEISS® T* anti-reflective coating minimizes flare



Built-in OSS (Optical SteadyShot) image stabilization



Dust and moisture-resistant design

MINIMUM FOCUS DISTANCE

0.92 ft (0.28 m)

MAXIMUM MAGNIFICATION RATIO

0.19x

FILTER DIAMETER

72mm

WEIGHT

18.3 oz (518 g)